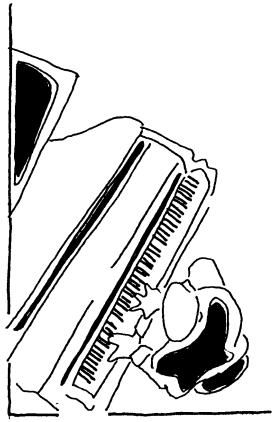


North Bay Country Dance Society
 PO Box 953
 Sebastopol, CA 95473-0953
 www.nbcds.org • info@nbcds.org
 (707) 527-9794



w•i•n•t•e•r 2•0•0•8



THE NEWSLETTER OF THE NORTH BAY COUNTRY DANCE SOCIETY line art by Becky Hill

Petaluma Contra Dance Moves

Dancers -- we're listening to you!
 Due to the concerns and comments about poor sound quality at Hermann Sons Hall, **we are moving our Petaluma contra dance to the Petaluma Woman's Club on the first Sunday of the month** -- January 6, February 3, and March 2 this quarter. **Dances will run from 6:30 - 9:30 p.m. with a lesson around 6:00.**

The Woman's Club, located at 518 "B" Street near downtown Petaluma, was built in 1913 and designed in the Craftsman style by the famous Sonoma County architect Brainerd Jones, who beat out Julia Morgan for the commission. It's a popular place for wedding receptions (which is why we had to book Sunday nights) with a great dance floor and acoustics. For those of you with fond memories of contra dancing at the Sonoma Woman's Club, the Petaluma Woman's Club will remind you of that venue. We danced at the Petaluma Woman's Club last March and people loved it!

Starting in the Spring, we plan to take advantage of the Sunday time slot to organize some potlucks and singing get-togethers. Consult the NBCDS calendar, our special flyer, or www.nbcds.org for this quarter's talent line-ups and directions. See you soon at the Petaluma Woman's Club!

Foreign Invasion

Plan now to be swept away at the North Bay dance premiere of **Tidal Wave** on Sunday, 30 March, in **San Rafael**. The band, known in their native Quebec as Raz-de-Marée, surges through on the way from *Dance Awakening*, and will appear with caller **Susan Petrick**. Piano player Rachel Aucoin, with her husband Sabin Jacques on accordion, were the core of **Domino** before forming **Tidal Wave** with Stuart Kenney, the renowned bass (and sometimes banjo) player who has backed bands from Rodney Miller and Wild Asparagus to Dewey Balfa. **Tidal Wave** is joined on this tour by fiddler Claudine Arcand and will guarantee you the best Quebecois dance music you can relish without a passport.

This dance runs from 7:30-10:30, and costs \$12 for members and \$14 general admission. The dollar just doesn't go so far in Canada these days!

Volunteers Make It All Happen

NBCDS is looking for volunteers to fill these important roles, beginning in mid-2008:

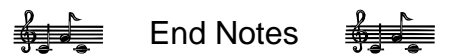
- **Newsletter editor:** Compiles quarterly calendar and news articles and produces **Hands Four** newsletter. Basic desktop publishing skills needed. Time requirements -- about 8 hours every three months.

Volunteers Make It All Happen (cont.)

- **Bookkeeper:** Reviews dance reports, pays bills, records receipts, coordinates financial recordkeeping with Treasurer. Familiarity with Quickbooks required. Time requirements -- TBD, year-round.

- **Newsletter mailer:** Distributes **Hands Four** on a quarterly basis to members and dance venues. Time requirements -- about 10 hours, every three months - less if you organize a "mailing party".

For further information, contact Craig Meltzner at craig@nbcds.org.



Your feet can learn the steps, but only your spirit can dance.

-- Unknown.

2007/2008 NBCDS Board members

Susan Amato, Vice President.....	829-7292
susan@nbcds.org	
Cathie Irwin, Secretary.....	542-4440
cathie@nbcds.org	
Craig Meltzner, Treasurer.....	526-6336
craig@nbcds.org	
Hideko Petchey.....	824-8939
hideko@nbcds.org	
Tom Schwartz.....	823-4982
tom@nbcds.org	
Emily Shaul.....	526-0854
emilys@nbcds.org	
Rosalie Towers.....	542-7955
Andy Westbom, President.....	(415) 456-8231
andy@nbcds.org	

North Bay Dance Calendar: Winter 2008

English Country Dances (ECD) are 2:00–4:30 pm; admission is \$10 adults, \$8 members, \$3 children.
 NBCDS contra dances are 8–11 pm except as noted, with a 7:30 lesson for newcomers.
 Regular admission: \$10 adults, \$8 members, \$2 children ages 6–17, under 6 free, FT students with ID \$5.
 * dances below are not sponsored by NBCDS



NBCDS DanceLine: (707) 527-9794 • email: info@nbcds.org • www.nbcds.org

Key to Hall Locations and Contacts (all 707 except as noted)

ATM: Weekly Apple Tree Morris: 829-3478, kalia@sbcglobal.net
PET: 1st Sun Petaluma Woman's Club, 518 B Street, Petaluma
New venue and schedule -- 6:30 - 9:30 p.m., 823-4982, tom@nbcds.org
 SEB: 1st & 3rd Sun ECD 2–4:30 pm, Wischemann Hall, 460 Eddie Lane, Sebastopol, jberger@sbcglobal.net, \$10/\$8
 SEB 4th Sat Wischemann Hall, 829-6666, elizd@nbcds.org
 SRF: 2nd Sat Marin Masonic Lodge, Lootens Place @ Fourth, San Rafael, 415-302-9503, andy@nbcds.org
 SRO: 3rd Fri, 5th Sat Monroe Hall, 1400 W. College Ave., Santa Rosa, 566-9684, robweeks@sonic.net
 NVL: 1st Sat Napa Valley Contra Dance, Tucker Farm Center, 1201 Tucker Rd. at Hwy 29 just north of Bothe State Park entrance;
 7:30 - 10:30 p.m. w/7:00 p.m. lesson; Celia Ramsay, 963-5667, \$10
 UKI: 2nd Sat Ukiah Methodist Church, 270 North Pine, Social Hall, back entrance, Elizabeth Mahon, 459-0430, \$7

January

Sat 5	Contra	NVL*	Mavis McGaugh	Bandemonium: Lee Anne Welch (fiddle), Eric Anderson (piano)
Sun 6	English	SEB	David Newitt	The Humuhumunukunukuapua'a and Strathspey Society Band
Sun 6	Contra	PET	Warren Blier	The Crabapples: Marta Lynch (fiddle), Norm Cotton (piano and fiddle), Sarah Springer (bass and foot percussion), Bob Silberstein (mandolin and piano) New day and venue -- see information above!
Sat 12	Contra	SRF	Lynn Ackerson	Swing Farm: Ray Bierl (fiddle), Charlie Hancock (keyboard), Steven Strauss (bass)
Sat 12	Contra	UKI*	Mavis McGaugh	West Road: Laura Smith (fiddle), Darin Smith (cello, guitar, fiddle), Bob Laughton (guitar, mandolin)
Fri 18	Contra	SRO	Andy Wilson	Flashpointless: Jon Berger (fiddle), Rebecca King (piano)
Sun 20	English	SEB	Sam Weiler	Midnight Smørgåsbord: Erin Vang (brass), Jon Berger (violin), Noel Cragg (piano)
Sat 26	Contra	SEB	Tina Fields	Wild Hog Contra Band: Anne Goess (fiddle), Daniel Schoenfeld (button accordion), Bob Laughton (guitar/banjo)

February

Sat 2	Contra	NVL*	Lynn Ackerson	The Road Oilers: Mike Drayton (fiddle), Jon Pedersen (banjo), Perry Fly (guitar), Chuck Wiley (bass)
Sun 3	English	SEB	Alan Winston	Susan Worland (violin), Debra Tayleur (piano)
Sun 3	Contra	PET	Andy Wilson	Erin Shrader (fiddle), Richard Mandel (guitar, banjo) New day and venue -- we're not kidding -- see information above!
Sat 9	Contra	SRF	Warren Blier	Killarney Boys of Pleasure: Chris Knepper (fiddle), Eric Hounshell (flute, percussion), John Ward (guitar)
Sat 9	Contra	UKI*	Erik Hoffman	Erik Thor and Hands Four: Erik Hoffman (fiddle), Michael Harmon (guitar), Ingrid Noyes (banjo, accordion)
Fri 15	Contra	SRO	Susan Petrick	Chris Knepper (fiddle), Noel Cragg (keyboard)
Sun 17	English	SEB	Kalia Kliban	Jon Berger (violin), Laurie Reaume (piano), Riggy Rackin (English concertina)
Sat 23	Contra	SEB	Karen Fontana	Flashpoint: Rebecca King (piano), Howard Booster (fiddle), Jon Berger (fiddle)

March

Sat 1	Contra	NVL*	Celia Ramsay	Flashpointless: Jon Berger (fiddle), Rebecca King (piano)
Sun 2	English	SEB	Mary Luckhardt	Chuck Ward (piano), Janette Duncan (violin), Dan Reynolds (double bass)
Sun 2	Contra	PET	Mavis McGaugh/Tina Fields	Flashpoint: Howard Booster (fiddle), Jon Berger (fiddle), Rebecca King (piano) New day and venue -- seriously, folks - we moved -- see information above!
Sat 8	Contra	SRF	No dance - hall unavailable	See March 30 listing below for special San Rafael contra dance
Sat 8	Contra	UKI*	Kirsten Koths	Flashpoint: Howard Booster (fiddle), Jon Berger (fiddle), Rebecca King (piano)
Sun 16	English	SEB	Sharon Green	Rebecca King (piano), Howard Booster (violin)
Fri 21	Contra	SRO	Lynn Ackerson	Figmments (VT): Ethan Hazzard-Watkins (fiddle), Anna Patton (clarinet), Owen Morrison (guitar)
Fri 21	Contra	NVL*	Celia Ramsay	The Bristol Players: (from the UK!) Fiona Barrow (fiddle), Eddy Jay (accordion) Special extra dance!
Sat 22	Contra	SEB	Mavis McGaugh	Laura Smith (fiddle), Bob Laughton (tenor banjo, mandolin, guitar)
Sat 29	Contra	SRO	Tina Fields/Chuck Galt	Fiddlerats: Caroline McCaskey (fiddle), Cole Ingraham (flute, djembe), Terrell Liedstrand (guitar, mandolin)
Sun 30	Contra	SRF	Susan Petrick (NV)	Tidal Wave (QUE): Rachel Aucoin (piano), Sabin Jacques (accordion), Claudine Arcand (fiddle), Stuart Kenney (MA) (bass, banjo); 7:30-10:30, \$12/\$14

Contra dancing and English Country Dancing are easy, fun, friendly and inclusive. All dances are taught and prompted, and feature great live music. No experience is necessary; come alone or bring a friend. Wear comfortable clothes and low, smooth-soled, comfortable shoes. Scent-free dancing appreciated! New dancers are encouraged to come early for an orientation, and for simpler dances early in the evening.
 Parents Please Note: All Non-Dancing Children Must Be Supervised.