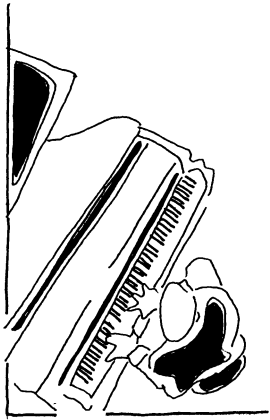


North Bay Country Dance Society
 PO Box 953
 Sebastopol, CA 95473-0953
 www.nbcds.org • info@nbcds.org
 (707) 527-9794



f•a•l 2•0•0•7



You Don't Need to Be a Dance Gypsy This Fall

We're bringing fabulous touring talent to a contra dance near you. Check out these lineups and get the dates on your calendar!

San Rafael has the 5 exuberant members of the Ohio band **Hotpoint** along with **Seth Tepfer** of Florida on **Sunday, 7 October**, for a special dance at Marin Masonic. This dynamic team is the core of the *Dancing Fool* weekend that many of us set our dance clocks by. The contra is from 7:30-10:30 and costs \$10 and \$12, a great dance bargain.

Santa Rosa on 19 October brings a special **3 O'clock Shadow** formation including swing master **Peter Langston** of Seattle, with **Fred Park** out from North Carolina to call.

Santa Rosa on 16 November will feature **Joyride**, Erik Weberg's band from Portland, along with renowned Wisconsin caller **Carol Ormand**.

In **December** we are luring the **Groovemongers** out to the Left Coast from New York and Rhode Island as a trio. Rebecca, Jane and C.W. will be in **Petaluma** on Friday the **7th** and in **San Rafael** on Saturday the **8th** playing their irresistible collection of standards and originals. Special dance prices prevail: \$10 and \$12 tickets get you in for this group.

Dance Gypsy (cont.)

We celebrate the close of the year with two great dances featuring **Celticladda**, Randy Miller's hard-charging trio based in New England, plus the irrepressible **Susie Kendig** calling. Did you know she's moved to Portland? The **Santa Rosa fifth Saturday (29th)** dance at Monroe Hall is the warm-up (\$10/\$12) and the **New Year's Eve** extravaganza in **San Rafael** is where you swing in the New Year with partners and neighbors. The savvy contradancers know to get their tickets (\$20/\$25) ahead of time for that one. If any are available at the door, they'll be \$25 and \$30.

Know Your Dance Manager

Did you know that every NBCDS dance has an assigned dance manager? The dance manager is available to answer questions and solve problems that may arise. We want our dances to be fun, safe, and comfortable for everyone. Talk with the dance manager if, e.g.,

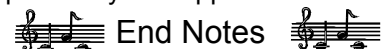
- + You're having problems hearing the music or the caller, or music is too loud.
- + Someone makes you feel uncomfortable and you need assistance.
- + You need first aid.

Look for the name of the dance manager at the entry table. We're here to help.

Join NBCDS Now

2008 NBCDS membership forms are now available. There is a discounted rate (\$17) for people who join before October 31, 2007, and it's still a bargain at the standard rate of \$20. Discounts at all NBCDS (and other CDSS) dances, *Hands Four* mailed to you, and the Membership Directory are just a few membership benefits.

Membership dues cover less than half our overhead costs -- insurance, our CDSS membership, mailings, etc. We appreciate your support!



Those who dance are considered insane by those who can't hear the music.

George Carlin

2007/2008 NBCDS Board members

Susan Amato, Vice President.....	829-7292
susan@nbcds.org	
Cathie Irwin, Secretary.....	542-4440
cathie@nbcds.org	
Craig Meltzner, Treasurer.....	526-6336
craig@nbcds.org	
Hideko Petchey.....	824-8939
hideko@nbcds.org	
Tom Schwartz.....	823-4982
tom@nbcds.org	
Emily Shaul.....	526-0854
emilys@nbcds.org	
Rosalie Towers.....	542-7955
Andy Westbom, President.....	(415) 456-8231
andy@nbcds.org	

North Bay Dance Calendar: Fall 2007

English Country Dances (ECD) are 2:00–4:30 pm; admission is \$10 adults, \$8 members, \$3 children.
NBCDS contra dances are 8–11 pm except as noted, with a 7:30 lesson for newcomers.
Regular admission: \$10 adults, \$8 members, \$2 children ages 6–17, under 6 free, FT students with ID \$5.
* dances below are not sponsored by NBCDS



NBCDS DanceLine: (707) 527-9794 • email: info@nbcds.org • www.nbcds.org

Key to Hall Locations and Contacts (all 707 except as noted)

ATM: Weekly Apple Tree Morris: 829-3478, kalia@sbcglobal.net
PET: 1st Fri Hermann Sons Hall, 860 Western Ave., Petaluma, 823-4982, tom@nbcds.org
SEB: 1st & 3rd Sun ECD 2–4:30 pm, Wischemann Hall, 460 Eddie Lane, Sebastopol, jberger@sbcglobal.net, \$10/\$8
SEB: 4th Sat Wischemann Hall, 829-6666, elizd@nbcds.org
SRF: 2nd Sat Marin Masonic Lodge, Lootens Place @ Fourth, San Rafael, 415-302-9503, andy@nbcds.org
SRO: 3rd Fri, 5th Sat Monroe Hall, 1400 W. College Ave., Santa Rosa, 566-9684, robweeks@sonic.net
NVL: 1st Sat Napa Valley Contra Dance, Tucker Farm Center, 1201 Tucker Rd. at Hwy 29 just north of Bothe State Park entrance;
New schedule -- 7:30 - 10:30 p.m. w/7:00 p.m. lesson; Celia Ramsay, 963-5667, \$10
UKI: 2nd Sat Ukiah Methodist Church, 270 North Pine, Social Hall, back entrance, Elizabeth Mahon, 459-0430, \$7

October

Fri 5	Contra	PET	Charlie Fenton	The Road Oilers: Mike Drayton (fiddle), Jon Pedersen (banjo), Perry Fly (guitar), Chuck Wiley (bass)
Sat 6	Contra	NVL*	Kirsten Koths	Fiddle Rats: Caroline McCaskey (fiddle), Terrell Liedstrand (guitar), Cole Ingraham (flute, djembe) - Dance is 7:30 - 10:30 p.m., lesson at 7:00 p.m.
Sun 7	English	SEB	Mary Luckhardt	Laurie Reaume (piano), Jon Berger (violin), Martha Krones (flute)
Sun 7	Contra	SRF	Seth Tepfer (GA)	Hotpoint (OH): Hilarie Burhans (banjo), Mark Burhans (fiddle), Marlene Shostak (keyboard), Mark Hellenberg (percussion), Nick Weiland (bass) \$10 members, \$12 general 7:30-10:30 p.m.
Sat 13	Contra	SRF	No Dance - special San Rafael contra dance Sunday, October 7 - see above.	
Sat 13	Contra	UKI*	Lynn Ackerson	Janette Duncan (violin) and friends
Fri 19	Contra	SRO	Fred Park (SC)	Three O'Clock Shadow: Erik Hoffman (fiddle), Chris Grampp (guitar), Peter Langston (WA) (mandolin, banjo), Adam Cavan (bass)
Sun 21	English	SEB	Gary Thomas	Chuck Ward (piano), Erin Vang (brass), Jon Berger (violin)
Sat 27	Contra	SEB	Mavis McGaugh/Tina Fields	Flashpoint: Rebecca King (piano), Howard Booster and Jon Berger (fiddles)

November

Fri 2	Contra	PET	Karen Fontana	An Drochaid: Jon Goodwin (fiddle), Debra Tayleur (piano), Elizabeth Douglas (percussion)
Sat 3	Contra	NVL*	Ken Olcott	The Road Oilers: Mike Drayton (fiddle), Jon Pedersen (banjo), Perry Fly (guitar), Chuck Wiley (bass) - Dance is 7:30 - 10:30 p.m., lesson at 7:00 p.m.
Sun 4	English	SEB	Bob Fraley	Chuck Ward (piano), Janette Duncan (violin), Michael Siemon (English concertina)
Sat 10	Contra	SRF	Joyce Miller	Bandemonium!: Lee Anne Welch (fiddle), Eric Anderson (piano), Kathrine Gardner (fiddle)
Sat 10	Contra	UKI*	Jim Saxe	Gus Garelick (fiddle), Don Coffin (guitar)
Fri 16	Contra	SRO	Carol Ormand (WI)	Joyride: Erik Weberg (OR) (flute, harmonica, bombarde), Jeff Kerssen-Griep (WA) (guitar, djembe), Sue Songer (OR) (piano, fiddle), Kathleen Towers (OR) (fiddle)
Sun 18	English	SEB	Kalia Kliban	Rebecca King (piano), Jon Berger (violin), Riggy Rackin (English concertina)
Sat 24	Contra	SEB	Karen Fontana	An Drochaid: Jonathan Goodwin (fiddle), Debra Tayleur (piano), Elizabeth Douglas (percussion)

December

Sat 1	Contra	NVL*	Celia Ramsay	Judy, Dan and Friends: Judy Stavely (fiddle), Dan Warrick (guitar), et al - Dance is 7:30 - 10:30 p.m., lesson at 7:00 p.m.
Sun 2	English	SEB	Lise Dyckmann	Rebecca King (piano), Janette Duncan (violin)
Fri 7	Contra	PET	Joyce Miller	Groovemongers: Rebecca McCallum (NY) (fiddle), C.W. Abbott (RI) (guitar, mandolin), Jane Knoeck (NY) (keyboard, accordion) - \$10 members, \$12 general Special location! - Petaluma Vets Memorial Hall, 1094 Petaluma Blvd. South, PET
Sat 8	Contra	SRF	Susan Petrick	Groovemongers: Rebecca McCallum (NY) (fiddle), C.W. Abbott (RI) (guitar, mandolin), Jane Knoeck (NY) (keyboard, accordion) - \$10 members, \$12 general
Sat 8	Contra	UKI*	Lea Smith	The San Francisco Scottish Fiddlers
Sun 16	English	SEB	Kalia Kliban	Debra Tayleur (piano), Jon Berger (violin)
Fri 21	Contra	SRO	Lynn Ackerson	Lucoo: Rebecca King (keyboard), Lee Anne Welch (fiddle), Karl Franzen (guitar, bouzouki, whistle) Special time! 8:00 - 11:30 p.m. - POTLUCK DESSERT BREAK
Sat 22	Contra	SEB	Dance cancelled - Happy Holidays!	
Sat 29	Contra	SRO	Susie Kendig (OR)	Celticladda: Randy Miller (NH) (fiddle), Tom Hodgson (NY) (guitar), Eric Anderson (piano) \$10 members, \$12 general
Mon 31	Contra	SRF	Susie Kendig (OR)	Celticladda: Randy Miller (NH) (fiddle), Tom Hodgson (NY) (guitar), Eric Anderson (piano) NEW YEARS EVE Extravaganza! 8:00 p.m. - midnight. \$20 members/\$25 general -- advance purchase; \$25/\$30 at the door if available

Contra dancing and English Country Dancing are easy, friendly and inclusive. All dances are taught, prompted, and feature great live music. No experience necessary; come alone or bring a friend. Wear comfortable clothes and low, smooth-soled, shoes. Scent-free dancing appreciated! New dancers are encouraged to come early for an orientation, and for simpler dances early in the evening. Non-Dancing Children Must Be Supervised.