

North Bay Country Dance Society
 PO Box 953
 Sebastopol, CA 95473-0953
 www.nbcds.org • info@nbcds.org
 (707) 527-9794



S•U•M•M•E•R 2•0•0•9



A Tsunami of contra pleasure!

Tidal Wave with Lisa Greenleaf in San Rafael on July 11

Fresh from American Week in Mendocino, this impressive array of talent from Quebec and Massachusetts will leave you breathless with their virtuosity and irresistible repertoire. "Rachel Aucoin is one of the keyboard deities," swears Eric Anderson, who should know. Her husband Jacques Sabin, a left-handed accordion player, shares melody with fiddler Eric Favreau, and the dearest head-bobbing bass player in the land, Stuart Kenney, completes the quartet. Lisa Greenleaf is on every programmer's list of top 10 callers across the country. From Massachusetts, she is versatile, skillful and witty. Get it up on your calendar now: Saturday, 11 July, Marin Masonic Hall on Lootens between 4th and 5th in San Rafael. Special contra prices: \$10 members, \$12 general admission.

Have You Tried English?

If you have never tried English Country Dancing, now is the time. It is very social, full of fun and gaiety, rich with eye contact and flirtation, and easily learned. Those that have danced Contra or Scottish can master English in a session or two. Those who never danced at all can and do master English Country Dancing with just a handful of sessions. Of course, all English Country Dancers experience increased enjoyment as they continue to dance through life. It just gets better and better. And it wears less on the joints and muscles than some other dance forms. We are fortunate to have a vibrant, active and growing English Country Dance Community here in the North Bay. We dance to live music on first, third and fifth Sunday afternoons at Wischemann Hall in Sebastopol. Come join us!

Save Endangered San Rafael Dance!

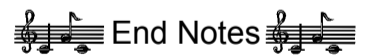
We have been without a dance manager for the San Rafael dance for some months now. Volunteers have kindly chipped in to help, but it has been a lot of work for our Board President, Susan Amato, to try and organize and beg and plead to keep this dance going. This cannot continue without regularly scheduled folks we can count on to keep this dance thriving. Please consider taking on this volunteer position for a set time period. It can be a shared position but it needs to be a commitment from one or two, or possibly up to four people. Please let one of the Board of Directors know if you would consider committing on a regular basis to a team of folks to manage this dance. It is a rewarding job. You get to know the dancers better, you feel more a part of our community, and you can experience the fulfillment of keeping our dances running smoothly.

Dance Etiquette

Andy Westbom and Stacy Carr attended a workshop in April aimed at generating ideas to attract younger people to Contra dances. The workshop was offered by the Country Dance and Song Society. Many great ideas were generated, but retention of potential new dancers was of big concern. If we can recruit young people to our dances we want to be able to keep them coming back. Part of the etiquette of being a respectful, experienced dancer is knowing how to be welcoming, kind and gentle with our new dancers. I think most of us are good with the first two but the third attribute can be lacking sometimes. Can you remember what it was like as a new dancer to be flung about on the dance floor or swung about until you were dizzy? As we become more experienced at Contra dancing we forget how overwhelming learning the calls and moves can be. Please feel free to take it slow with new dancers to help them acclimate at their own speed.

Dance Managers Make it Happen

Let's appreciate our dance managers this quarter. The dance managers are crucial to the success of our dances. They open and close the halls, greet dancers, take money, answer questions, balance the expense reports, pay the talent, and make sure everything runs smoothly. We could not relax and enjoy the evening if it were not for these stalwart volunteers. The Santa Rosa dance is managed by Emily Shaul and Robert Weeks, Tom Schwartz handles the Petaluma dance, and Mike Fynan keeps things running smoothly in Sebastopol. Please take the time to personally thank these dedicated volunteers the next time they greet you at a dance.



"What do you dance?"

— Bantu greeting to a member of another Bantu tribe.

2009 NBCDS Board of Directors

Susan Amato, President.....	829-7292
susan@nbcds.org	
Stacy Carr.....	338-9362
stacy@nbcds.org	
Cathie Irwin, Secretary.....	542-4440
cathie@nbcds.org..	
Craig Meltzner, Vice President.....	526-6336
craig@nbcds.org	
Arie Niernberger, Treasurer.....	292-5242
arie@nbcds.org	
Hideko Petchey.....	824-8939
hideko@nbcds.org	
Emily Shaul.....	526-0854
emilys@nbcds.org	
Andy Westbom.....	(415) 456-8231
andy@nbcds.org	

North Bay Dance Calendar: Summer 2009

English Country Dances (ECD) are 2:00–4:30 pm; admission is \$10 adults, \$8 members, \$3 children.
NBCDS contra dances are 8–11 pm except as noted, with a 7:30 lesson for newcomers.
Regular admission: \$10 adults, \$8 members, \$2 children ages 6–17, under 6 free, FT students with ID \$5.
* dances below are not sponsored by NBCDS



NBCDS DanceLine: (707) 527-9794 • email: info@nbcds.org • www.nbcds.org

Key to Hall Locations and Contacts (all 707 except as noted)

ATM: Weekly Apple Tree Morris: 829-3478, kalia@sbcglobal.net
 PET: 1st Sun Petaluma Woman's Club, 518 B Street, Petaluma; 6:30 - 9:30 pm, 707-823-4982, tom@nbcds.org
 SEB: 1st & 3rd Sun ECD 2–4:30 pm, Wischemann Hall, 460 Morris Street, Sebastopol, jberger@sbcglobal.net
 SEB: 4th Sat Wischemann Hall, 460 Morris Street, Sebastopol, 707-569-0565, mnfynan@sonic.net
 SRF: 2nd Sat Marin Masonic Lodge, Lootens Place @ Fourth, San Rafael, 415-302-9503, andy@nbcds.org
 SRO: 3rd Fri, 5th Sat Monroe Hall, 1400 W. College Ave., Santa Rosa, 707-566-9684, robweeks@sonic.net
 NVL*: 1st Sat Napa Valley Contra Dance, Tucker Farm Center, 1201 Tucker Rd. at Hwy 29 just north of Bothe State Park entrance; 7:30 - 10:30 pm, beginners' lesson 7:00 pm; Celia Ramsay, 707-963-5667, \$10
 UKI*: 2nd Sat Ukiah Methodist Church, 270 North Pine, Social Hall, back entrance; Ulla Brunnberg-Rand, 707-467-0311;

July

Sat 4	Contra	NVL*	DANCE CANCELLED. HAPPY FOURTH OF JULY!	
Sun 5	English	SEB	Sharon Green	Rebecca King (piano), Janette Duncan (fiddle), Jon Berger (viola)
Sun 5	Contra	PET	Charlie Fenton	Night Watch: Naomi Morse (VT) (fiddle), Elvie Miller (NH) (piano, accordion)
Sat 11	Contra	SRF	Lisa Greenleaf (MA)	TidalWave: Eric Favreau (QUE) (fiddle), Rachel Aucoin (QUE) (piano), Sabin Jacques (QUE) (accordion), Stuart Kinney (MA) (bass, banjo) Special Dance • \$10 members, \$12 general
Sat 11	Contra	UKI*	Mark Goodwin	West Road: Laura Smith (fiddle), Darin Smith (guitar, fiddle, cello), and friends
Fri 17	Contra	SRO	Lynn Ackerson	Alan Snyder (fiddle), David Hansen (guitar)
Sun 19	English	SEB	Philippe Callens	Chuck Ward (piano), Beverly Jacobs (flute), Jon Berger (violin)
Sat 25	Contra	SEB	TBA	TBA

August

Sat 1	Contra	NVL*	Mavis McGaugh	Three Fifths of Scotch: Eloise Blanchard (fiddle), Debra Tayleur (piano), Tony Bishop (Irish whistles)
Sun 2	English	SEB	Lise Dyckmann	Chuck Ward (piano), Susan Worland (violin)
Sun 2	Contra	PET	Warren Blier	The Angell Brothers Band: Thomas Angell (fiddle), Barry Angell (mandolin, guitar, banjo), Juan Browne (bass)
Sat 8	Contra	SRF	Woody Lane (OR)	The Angell Brothers Band: Thomas Angell (fiddle), Barry Angell (mandolin, guitar, banjo), Juan Browne (bass)
Sat 8	Contra	UKI*	Reuven AnafShalom	The Skelton Crew: Andi Skelton (fiddle), Rod Skelton (guitar)
Sun 16	English	SEB	Kalia Kliban	Chuck Ward (piano), Marilyn Simpson (violin)
Fri 21	Contra	SRO	Donnalyn Karpeles (SB)	Ratnip: Howard Booster (fiddle), Caroline McCaskey (fiddle), Alan Snyder (piano), Cole Ingraham (flute, djembe)
Sat 22	Contra	SEB	TBA	TBA
Sat 29	Contra	SRO	Leda Shapiro (LA)	Steve Shapiro (LA), (banjo, mandolin), Charlie Hancock (piano), Chris Knepper (fiddle) CHALLENGING CONTRA DANCE • NOT FOR BEGINNERS
Sun 30	English	SEB	Gary Thomas	Rebecca King (piano), Jon Berger (violin, viola), Michelle Levy (violin, viola)

September

Sat 5	Contra	NVL*	Celia Ramsay	The Crabapples: Marta Lynch (fiddle), Norm Cotton (keyboard, fiddle), Bob Silberstein (guitar, mandolin, dumbek)
Sun 6	English	SEB	Ric Goldman	Debra Tayleur (piano), Jon Berger (violin), Michael Siemon (English concertina)
Sun 6	Contra	PET	Tina Fields	An Drochaid: Jonathan Goodwin (fiddle), Debra Tayleur (piano), Elizabeth Douglas (percussion)
Sat 12	Contra	SRF	Warren Blier	Erin Shrader (fiddle), Richard Mandel (guitar)
Sat 12	Contra	UKI*	Jim Saxe	The San Francisco Scottish Fiddlers led by Janette Duncan
Fri 18	Contra	SRO	Tina Fields	Swing Farm: Ray Bierl (fiddle), Charlie Hancock (piano), Steven Strauss (bass)
Sun 20	English	SEB	David Newitt	Humuhumunukunukuapua'a and Strathspey Society Band
Sat 26	Contra	SEB	TBA	TBA

Contra dancing and English Country Dancing are easy, fun, friendly and inclusive. All dances are taught and prompted, and feature great live music. No experience is necessary; come alone or bring a friend. Wear comfortable clothes and low, smooth-soled, comfortable shoes. Scent-free dancing appreciated! New dancers are encouraged to come early for an orientation, and for simpler dances early in the evening. To see what contra dancing is all about before you attend a dance you can go online to http://www.contradance.org/html/what_is.php for video lessons.